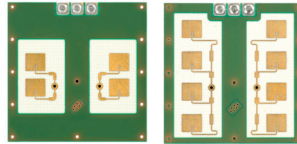


IPM-170 / IPM-365

The IPM-170 has a rotation-symmetric antenna pattern that makes the sensor the perfect choice for ceiling mounting. The IPM-365 is the 3V version of the IPM-165 that sets a standard in the field of intrusion alarm and low-cost door openers.

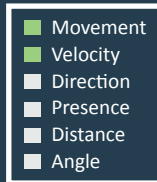
Product Family: Low Cost K-Band Transceiver

- Applications:**
- Door Openers
 - Security Applications
 - Industrial Applications



Features:

- » radar-based motion detector working in the 24GHz - ISM - Band
- » available in different frequency ranges for worldwide use
- » advanced LCO-oscillator with low current consumption
- » split transmit and receive path for maximum gain
- » very compact outline dimensions

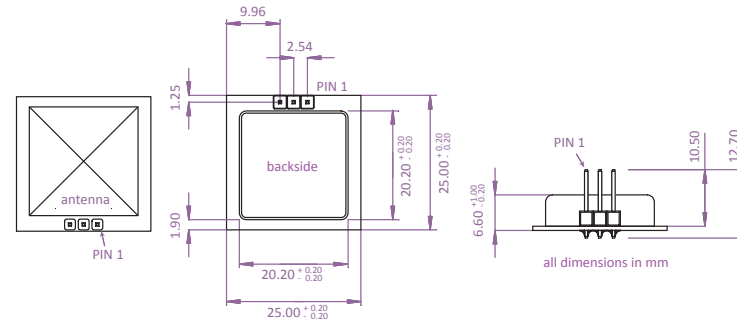


RoHs Info: This product is compliant to the restriction of hazardous substances (RoHS - European Union directive 2002/95/EG).

ESD Info: This InnoSenT sensor is sensitive to damage from ESD. Normal precautions as usually applied to CMOS devices are sufficient when handling the device. Touching the signal output pins has to be avoided at any time before soldering or plugging the device into a motherboard.



Outline Dimensions:



Technical Data:

Please contact InnoSenT for a detailed Data-Sheet.

Parameter	Symbol	Min.	Typ.	Max.	Units
transmit frequency	F	24.000		24.250	GHz
temperature drift (frequency)	Δf		-1		MHz/°C
IF-output	offset	-300		300	mV
IF-amplifier		no IF-amplifier included			kHz
supply current	I_{cc}		30	40	mA
operating temperature	T_{op}	-20		+60	°C

Specific Parameter	Symbol	IPM-170			IPM-365		
output power (EIRP)	P_{out}	typ. 16 dBm			typ. 13 dBm		
full beam width @ -3dB	horizontal	typ. 70°			typ. 80°		
	vertical	typ. 70°			typ. 32°		
side-lobe suppression	horizontal	typ. 13°			typ. 13°		
	vertical	typ. 13°			typ. 13°		
supply voltage	V_{cc}	min.	typ.	max.	min.	typ.	max.
		4.75	5.0	5.25	2.85	3.0	3.3